

Moor End Technology College in Huddersfield, West Yorkshire upgraded their Classroom Management Software to SANAKO Study 500 to allow the ICT department to extend ways to communicate with, collaborate with and support pupils in the learning environment. The school wanted to explore and develop new ways in which to manage and deliver lessons and resources and to escape the physical constraints and restrictions of the traditional classroom.

Moor End Technology College

- High school with 850 11 - 16 year old students
- Technology College status and Diploma in Digital Applications pilot school, committed to delivering innovative and challenging ICT programme of study at Key Stage 4
- Moor End specialises in the learning and teaching of Design & Technology, Mathematics and Science

SANAKO Study 500

- 125 student workstations across 5 computer suites
- Many resources to support, guide and reinforce student learning
- providing focus and reducing distraction and diversion within the class
- Functionality and ability to monitor and control activities, user collaboration increases class participation

Enhancing the Learning Environment at Moor End

Upgrading to SANAKO Study 500 has had a major impact at Moor End Technology College. Mr. Greg Gilbert, Head of ICT, wanted to effectively control the environment, but not at the expense of student learning.

After reviewing alternative classroom management solutions the decision to upgrade to Study 500 was made. Mr Gilbert says, "There were many class management systems available but I believed that Study 500 evolves out of a concern for teaching and learning rather than purely control and management."

Increasing Student Participation

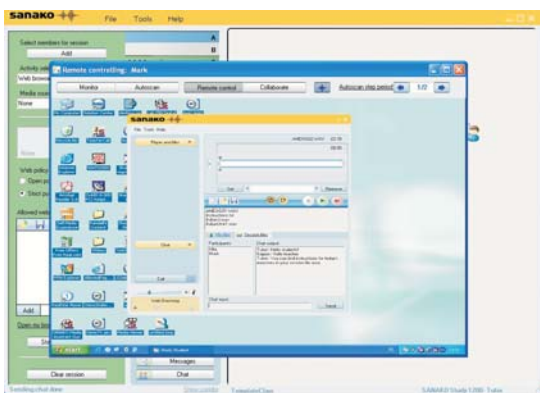
Collaboration tools are widely used at Moor End and as Mr. Gilbert states, "This allows the teacher to maintain control and awareness of the class from their desk and enables full class participation through the collaboration tool."

"At the same time students' have the ability to share and show their work to a teaching group through Study 500, this is a considerable asset and pupils generally enjoy and value this level of support and interaction."

Class Control

Managing learning in the IT environment is often challenging with many distractions facing the student, it is often difficult to monitor students work and activity during class.

These issues can be easily resolved with Study 500 through the mosaic view which enables the discrete monitoring of students' activity. Mr. Gilbert says, "This function provides a real time, continually refreshed snap shot of class activity that would be impossible to achieve in any other way."



Teachers can take command of students' screens and monitor their work



SANAKO Study 500 teacher interface mosaic view, monitoring students simultaneously



Lock and Launch

The unique lock and launch feature ensures that student attention is focused on the task at hand; class disruption is minimized as teachers can lock screens and keyboards and reduce student distraction.

The ability to launch files or applications to students is a major benefit and can be launched on top of a locked screen, this dramatically saves time during class as files and applications instantly appear on the students screen. The teacher can then save these files locally in preparation for another class.

Mr. Gilbert says, "The option to launch applications and documents directly to user PC's is an effective and efficient way of managing learning events."

Internet Access and Motivating Learning

Allowing students internet access was an initial concern, but teachers have the option to guide an individual student or group of students through a website and collaborate to highlight topics of interest.

The web browsing feature also enables teachers to allocate web browsing rights to individuals or groups of students by allowing or restricting access to selected sites, limiting access to a page or domain, or enabling or disabling hyperlinks.

Teachers at Moor End now feel more confident when permitting internet access during their lesson and can utilize this resource to enhance the class delivery.



Application and file launch to students from teacher interface



Student collaboration using text documents

The Future at Moor End

Moor End Technology College recognises how Sanako Study 500 has enhanced the way in which ICT lessons at the school are structured and delivered, Mr Gilbert says, "Study 500 transforms a network into an educational environment of enormous potential. It puts control (observation direction, intervention and support) at the fingertips of the teacher and its versatility is such that it is limited only by our imagination."

"Moor End primarily uses computer-based teaching technology in IT classes however, teachers from English and Mathematics are now eager to try out new teaching practices with the assistance of Study 500."

The teaching and support staff at Moor End are all delighted with the upgrade to Study 500 and describe the software as, 'An excellent product that provides exactly what we have been looking for and much more.'

Mr. Gilbert is also excited by the additional modules now available within the Study family including, Examination and Video Streaming and in particular, the soon to be released Polling extension which he says seems to offer the perfect solution to collecting and analysing pupil feedback about teaching and learning.

More information on Moor End Technology College at www.moorendtc.org.uk

For more details about SANAKO Corporation and our range of solutions for ICT-based learning please visit www.sanako.com