

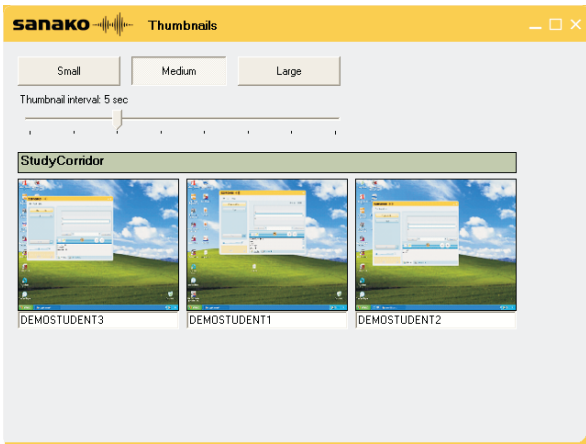


SANAKO Study Admin Module

Central point of management for school-wide
SANAKO Study environments with one software!

SANAKO Study Admin Module facilitates the smooth and effortless functioning of the SANAKO Study software teaching environments. This useful tool helps system and network administrators support and guide teachers and students by providing the administrators a range of resources to monitor teaching and learning activity in the network. Additionally, the Admin module provides basic tools for diagnosis of common usage problems in the system.





Network supervisors can easily monitor student activity by viewing thumbnail images of selected classroom.

Complete supervisory features

The features in the Admin Module allow for a range of supervisory activities: system administrators can monitor student activity, view thumbnails, remote control or shut down workstations, as well as discuss with workstation users while handling and investigating issues. This allows an IT supervisor to manage class activity, useful in situations when a teacher may not be present, or to provide teachers with live remote support when needed.

Thumbnail images

The module allows network supervisors to visually monitor student and teacher activity by viewing thumbnail images of a selected classroom. The size and update frequency of the thumbnail views can be adjusted for convenient viewing of client activity.

Easy trouble-shooting

With the Admin Module as part of their teaching environment, teachers can feel at ease when using technology in teaching, as the easy-to-use application provides hands-on administrator-level support. Should the teacher come across any situations where they need technical assistance, the Admin Module allows for preliminary trouble-shooting.

A secure whole-school solution

SANAKO Admin Module enhances the effectiveness of the school-wide Study environment, regardless of the size of the institution. Administrators will benefit from a centralized solution for the management, maintenance and supervision of the entire school.

Easy access for support at all times

IT-supervisors have full access to all Study classrooms and are able to provide discreet backup and support for teachers using Study software.

Visibility

Used with a SANAKO Crossroad server, the module allows the user to see all classrooms on the Crossroad server, as well as all users in the classrooms. Students who are not in a classroom (not logged in to a session) are in a "corridor" list and are also visible with the Admin Module. Thus, the module provides administrators a comprehensive status overview of the entire school-wide Study system.

Information

The Information feature extends the benefits of the SANAKO Study Admin Module outside the Study system into general IT-system supervision. The application will provide system administrators with a general PC information overview on all workstations connected to the Crossroad.

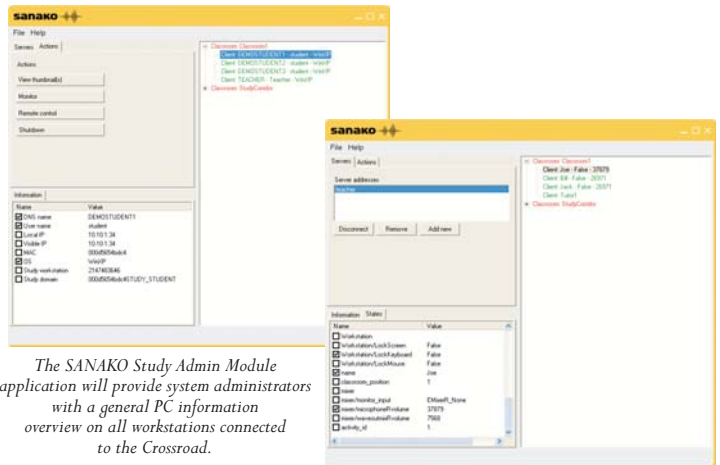
System administrators will also be able to view a thorough listing of the current status and technical configuration of the Study applications on any workstation in the network, which can be helpful when identifying problems or performing troubleshooting actions.

Discuss with system users

The discussion possibility allows system administrators to go over any situations with tutors or students verbally without either party leaving their respective workstations.

Minimum Requirements

The Admin Module can be used with SANAKO Study 500 / 1200 (from version 2.60 onwards), and it is compliant with the SANAKO Study minimum requirements.



The SANAKO Study Admin Module application will provide system administrators with a general PC information overview on all workstations connected to the Crossroad.

Microsoft, Windows, Windows Vista and the Windows Start button are registered trademarks of Microsoft Corporation in the United States and/or other countries.

